



CIVICS ISU

Major Culminating Activity

Youth Philanthropy Initiative Canada

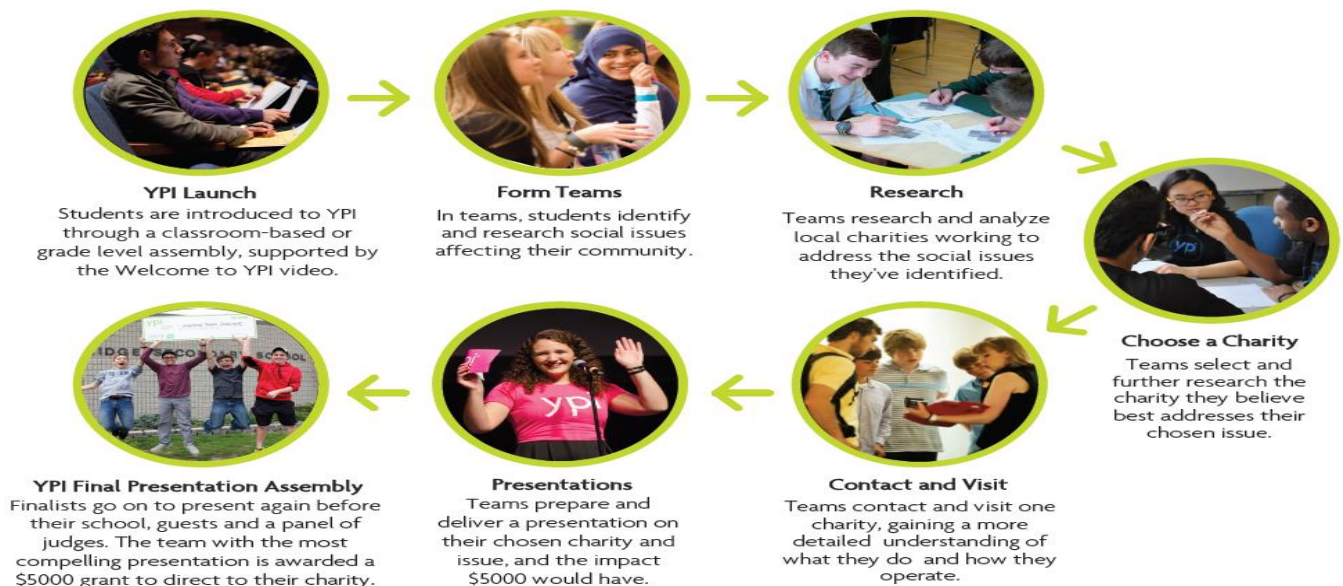
EACH YEAR, YPI CANADA GRANTS **HUNDREDS OF THOUSANDS OF DOLLARS** TO **COMMUNITY-BASED SOCIAL SERVICE CHARITIES**, 100% DECIDED BY THOUSANDS OF HIGH SCHOOL STUDENTS IN OUR **SCHOOL-BASED YOUTH PHILANTHROPY PROJECT**.

Curriculum Expectations Achieved:

- Political Inquiry and Skill Development
- Civic Awareness
- Civic Engagement and Action

The Project:

On your own, or in a group of no more than four people, you are to chose a local social service charity or organization to research and present for consideration to the Youth Philanthropy Initiative program, for a chance for that organization to win a grant of \$5,000. See the page “*What are some Community Social Issues?*” page for ideas on types of groups, and a list of who is not eligible for the grant.



Requirements of the project:

You must create and present your project to the class.

The list below outlines the information you need to include in your final YPI presentation:

- Full name of the charity
- The charity's registered charity number
- The mission and aims of the charity
- The history and background of the charity
- A clear explanation of how the charity supports the local community. (What services does it provide?)
- Describe the impact the charity makes in the community. (Ex: how many people does the organization help each year & how do they do that).
- A clear explanation of how your chosen charity would spend the grant.
- Information about how the charity is funded, and how the funds are spent. How would this charity spend a \$5 000 grant?
- Information about charity staffing and their use of volunteers.
- Give at least one example of an individual or family that the charity has helped.
- What is the charity's plan for the future?
- Give any other interesting facts or stories about the charity.

***** Remember, you (as the presenter) are the expert on this charity. Your goal is to get them a real \$5,000 donation by the YPI program!**